

Ortlinghaus



DC650

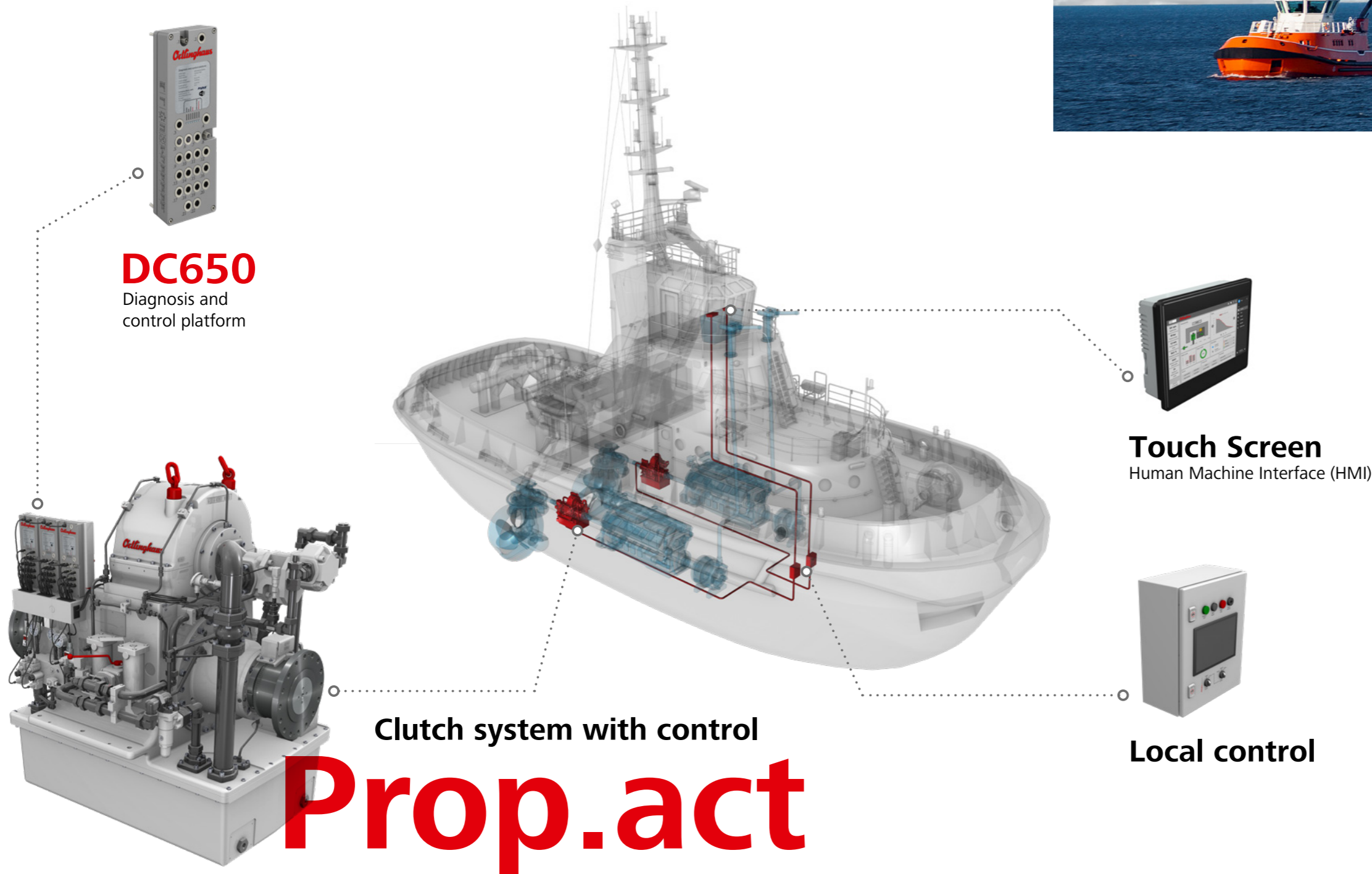
MARINE PROPULSION TECHNOLOGY

Diagnosis and control platform

Diagnosis and control in marine applications

The new and innovative DC650 diagnosis and control platform was developed by Ortlinghaus to meet the demands of the market for digitalization.

DC650



DC650
Diagnosis and control platform

Touch Screen
Human Machine Interface (HMI)

Local control

Clutch system with control

Prop.act

The DC650 is a scalable, flexible and highly compatible solution for both simple and complex diagnostic and control purposes. Designed for clutches, brakes and clutch units in marine propulsion technology – also for our clutch system solution of the Prop.act series.

Robust hardware and modern software enable application-specific monitoring of our technology.

With the integration of the DC650, condition values are measured seamlessly, critical conditions are detected and a failure of the ship propulsion may be prevented. At the same time the DC650 enables complex control including speed-controlled long-term slipping.

Our technical support and/or necessary spare parts can then be ordered in time before a breakdown occurs, thus improving the long term availability of the ship.

You can benefit from the advantages of the DC650 in next to no time through simple integration into the drivetrain.

Integrated system solution

The DC650 combines Ortlinghaus hardware with a modern, self-developed and secure software.



Hardware

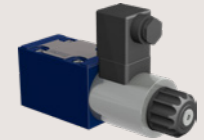
Customizable fieldbus connectivity

- Profinet, Modbus/TCP
- CAN bus based protocols



Integrated valve control

- Power outputs for direct valve control



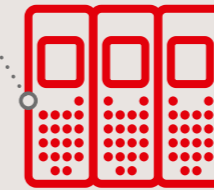
Integration of different sensor types

- Pressure
- Speed
- Temperature
- Level switches
- etc.



Scalability

- Multiple units can be combined to increase I/O capacity



Communication with cloud services

- Connection via LAN
- Communication via MQTT



Integrated web server

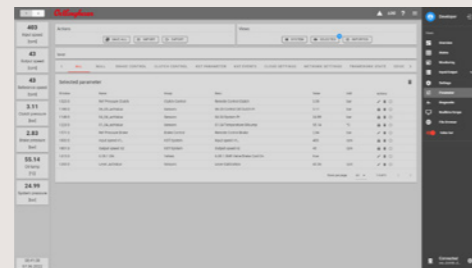
- Access per web browser
- No extra software required



Software

Parameter editor

- Clearly structured management of all parameters



Notifications and error list

- List of current and previous information
- Timecode for each entry



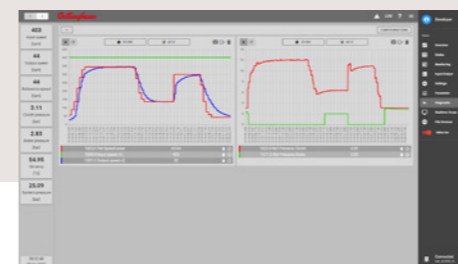
Application view

- Everything at a glance in the process overview
- Practical value bar for permanent control



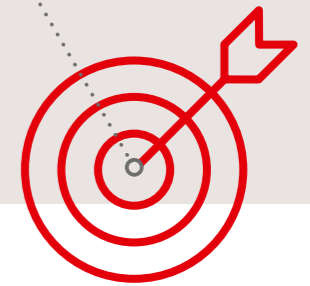
Scope function

- Useful scope function and convenient export function for data analysis



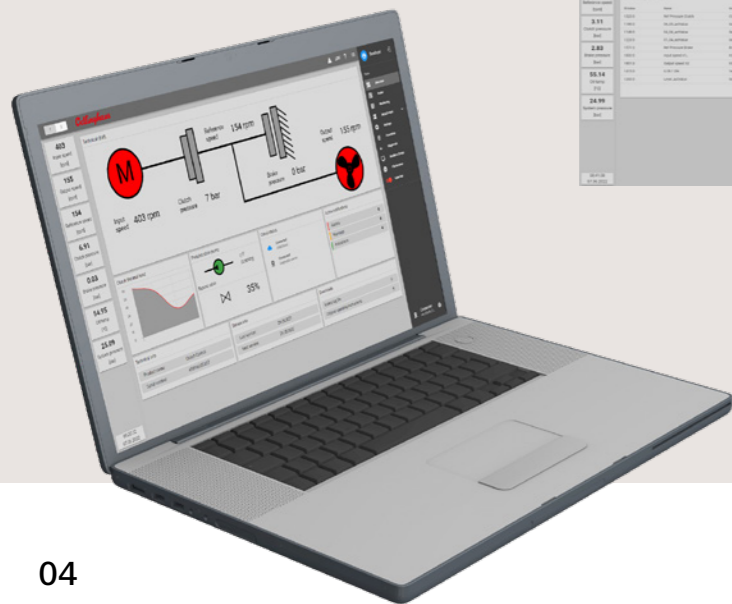
General functions

- Intuitive software update via browser
- Easy log file download



IT security

- Ortlinghaus software based on IEC 62443
- Wi-Fi can be deactivated
- No need for local network integration



Benefits

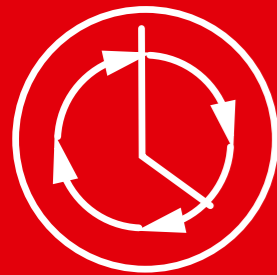
Arrange a product presentation with us and experience the advantages and possibilities of the DC650 for yourself.

Quick and easy commissioning of the Ortlinghaus technology through complete integration of the DC650 into the drivetrain



Lower maintenance costs through:

- Early detection of wear to minimize the need for spare parts
- Plannable maintenance intervals with optional remote maintenance



Increased ship availability through:

- Continuous condition monitoring of physical values such as speeds, pressures and flow rates
- Determination of the thermal load of Ortlinghaus clutches, brakes and clutch units
- Detection of critical conditions
- Warning in case of wear, defects and unacceptable pressure loss



Long-term data acquisition of operating states through:

- Integrated memory function
- Extended memory function (by use of optional cloud connection)

Maximum maneuverability through combining the DC650 with our slip clutch and braking solutions

Lower preventive maintenance costs through:

- Remote access to status data (optional with cloud connection)
- Condition diagnosis with the aid of memory data
- Condition diagnosis during vessel operation, which does not require drive downtime



Increased safety through:

- Warning of system-critical conditions

Technical data



- Clutch pressure
- Output speed
- Input speed
- Propvalve clutch

DC650

Technical data	DC650
Diagnosis-LEDs	1 × Status, 1 × Warning, 1 × Error, 2 × Application, 1 × Safety warning, 1 × Safety error
Power supply	19 – 36 V DC, galvanically isolated, redundant
Interfaces	
Network	1 × Ethernet 10/100 Mbit/s, M12 D-coded
Bus protocols	Profinet / Modbus/TCP, CAN
Bus interfaces	2 × Ethernet, M12 D-coded
Other	
Protection class	IP65
Web visualization	Yes
Dimensions	340 mm × 120 mm × 35 mm

Ortlinghaus-Werke GmbH
Kenhäuser Str. 125
42929 Wermelskirchen
Germany

Phone: +49 (0) 21 96 85-0
Mail: info@ortlinghaus.com
www.ortlinghaus.com